



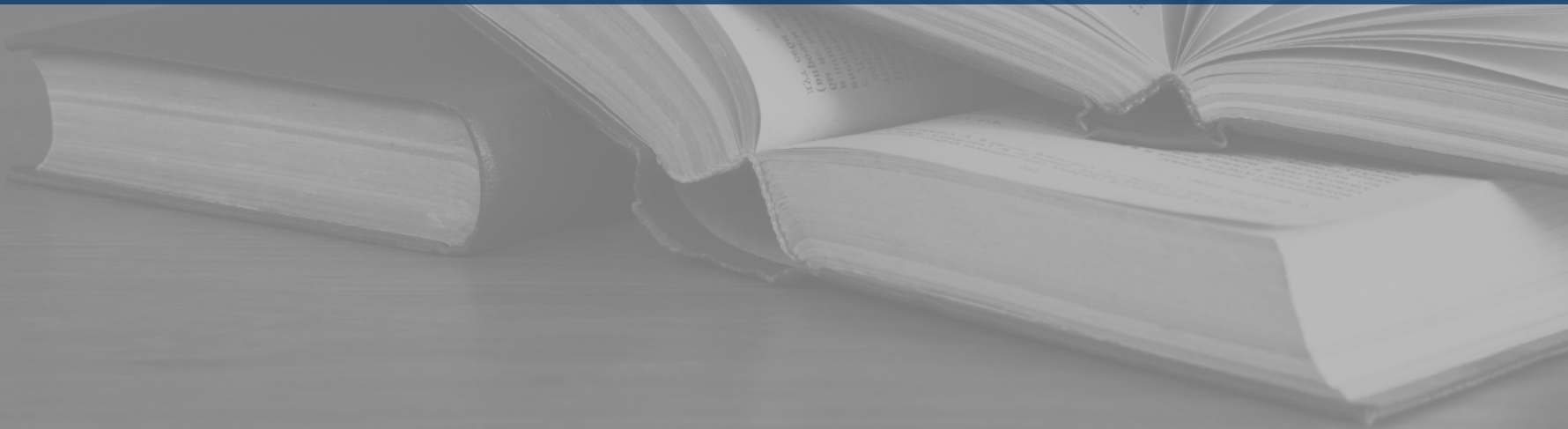
U.S. Immigration
and Customs
Enforcement

SEVP

STUDENT AND EXCHANGE VISITOR PROGRAM

SEVP at a Glance

March 26, 2020



Presentation Overview

1

LATEST NEWS

2

SETA ROLLOUT

3

SEVIS WAY FORWARD

4

NOTIFICATIONS AND FOLLOW-UP

6

HELPFUL RESOURCES

7

QUESTIONS

LATEST NEWS

Novel Coronavirus and International Students

Tips for Students Currently Outside the U.S.

- For international students who are currently outside of the U.S. who are exhibiting symptoms:
 - Initial students:
 - Can have their start date delayed and be issued a new Form I-20
 - Active students:
 - DSOs can authorize a medical reduced course load
 - DSOs can terminate their SEVIS records for authorized early withdrawal upon the student's request
 - Students on temporary absence:
 - May be advised not to travel to the United States until they can re-enroll in a full course of study

Novel Coronavirus and International Students

Tips for Students Currently Inside the U.S.

- For international students who are currently inside the U.S. who are exhibiting symptoms:
 - If it is not possible for the student to enroll for this term, DSOs can authorize a medically reduced course load
- For international students who are not exhibiting symptoms but school has closed or moved courses online:
 - Follow school's COVID-19 procedural adaptations as reported to SEVP, which may include: exceptions to full course of study and online/distance learning limits, school closure, remote learning adaptations in the US or in home country.

Novel Coronavirus and International Students

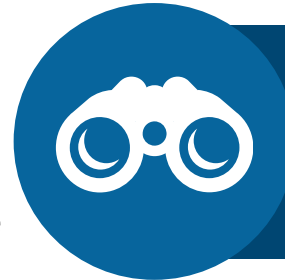
SEVP, DHS & CDC Online Resources

- **SEVP Guidance Documents:**
 - [Broadcast Message: COVID-19 and F and M Nonimmigrants](#) (January 2020)
 - [Broadcast Message: COVID-19 and Potential Procedural Adaptations for F and M Nonimmigrant Students](#) (March 2020)
 - [COVID-19: Scenarios for SEVP-certified Schools for Emergency Procedures](#) (March 2020)
 - [Optional COVID-19 School Reporting Template](#) that schools can use to report temporary procedural adaptations (March 2020)
 - [FAQs](#) & Updates can be found at: <https://www.ice.gov/covid19>
- Please direct students to follow directions from the CDC [cdc.gov/coronavirus/2019-ncov/downloads/sick-with-2019-nCoV-fact-sheet.pdf](https://www.cdc.gov/coronavirus/2019-ncov/downloads/sick-with-2019-nCoV-fact-sheet.pdf)

SETA ROLLOUT

SETA Overview

- SEVP launched the SEVP External Training Application (SETA) in November 2019
 - Online learning management tool for current and prospective DSOs
- Covers the rules and regulations governing SEVP and the Department of State's Exchange Visitor Program
 - Users may take each course at once or set their own pace towards completion
 - Users also have the option to test out of each course



REVIEW:

November SEVP broadcast message on SETA launch for more information

For more information on SETA account registration, access:

StudyintheStates.dhs.gov/Assets/SETA_Account_Creation_User_Guide.pdf

SETA Courses and Training

Course	Description
SEVP Basics	Provides an overview of SEVP, SEVIS and the management of nonimmigrant student records
SEVP 101	Discusses the history of SEVP and describes the different types of nonimmigrant students and exchange visitors
EVP 101	Introduces the U.S. Department of State's Exchange Visitor Program
Introduction to Initial SEVP Certification	Gives an overview of federal regulations that govern SEVP's school certification process and requirements

Pre-submitted Question



Who are the SETA courses available to?

SETA Page Navigation

Landing page for pre-registered SETA users

New users can create an account here

SETA can be accessed at the distinct log in page
<https://sevp.ice.gov/seta/login/index.php>

SETA Page Navigation

Creating a New Account

SEVP External Training Application

Create your new account

Required fields are noted by a **i**.

Username **i**
 You can create a username with:

- Lowercase letters
- Numbers
- The following symbols: Hyphen (-), underscore (_), period (.), or at sign (@).

-Missing username

Password **i**

- At least 12 characters
- At least 1 lower case letter
- At least 1 non-alphanumeric character such as *, -, or #
- At least 1 number
- At least 1 upper case letter

Do you have an active SEVIS account? **i**

Yes No

First Name **i**

Last Name **i**

Email Address **i**

Type your email again **i**

Mobile Phone Number

I wish to receive SETA-related texts at this number.

New users must provide all required information in order to create a new SETA account

↑
Click "Sign Me Up" to register

SETA Next Steps

- **SEVP expects to continually evolve the application and add additional courses**
 - As more courses are added, SEVP and the Department of State plan to require that all school and sponsor officials complete all SETA courses
- **SEVP will communicate the announcement of SETA to the public through SEVP Broadcast Messages, Study in the States, social media channels and [ICE.gov/SEVIS](https://ice.dhs.gov/SEVIS).**
 - SEVP will create a new resource page on Study in the States to house all publicly available information on SETA

NOTIFICATIONS AND FOLLOW-UP

Certification Expiration Date

Updated Process

- Any school certified or recertified after March 1, 2020, will receive their next CED notice 180 days before the two-year deadline
 - Schools will continue to receive their CED notification through an automatic SEVIS-generated email
- SEVP will work to ensure all schools are notified and submit their complete recertification petition and supporting documentation within the 2-year timeframe
 - SEVP has hired new adjudicators to reduce the recertification processing time

Visit the Getting Started with SEVP Recertification page
StudyintheStates.dhs.gov/getting-started-with-sevp-recertification

Frequently Asked Question



**Certification
Expiration Date**

When does the new recertification notification process begin?

Frequently Asked Question



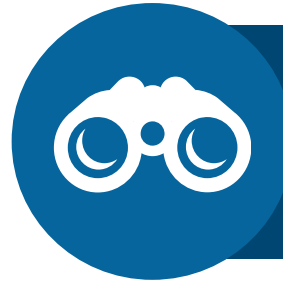
Certification Expiration Date

Is there anything that schools will need to do differently to recertify under this new process?

Be in the Know

SEVIS Release 6.51

- SEVIS Release 6.51 went live on Feb. 28, 2020
- Release includes:
 - New student and dependent fields
 - Updated look and feel of exchange visitor information
 - New validations



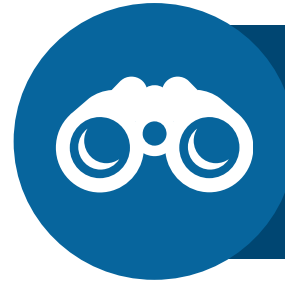
WATCH:
Release Webinar: SEVIS
Release 6.51 on
Study in the States

Access the release planning guide in the SEVIS Help Hub
StudyintheStates.dhs.gov/SEVIS-Help-Hub/Learn-More/SEVIS-Enhancements/SEVIS-Release-651-Planning-Guide

Be in the Know

SEVP Portal Release 1.10

- SEVP Portal Release 1.10 occurred in October 2019
- Students will only be able to access their portal account six months after their OPT end date
- **Automated email notifications:**
 - Six months before closure date
 - 30 days before closure date
 - Day of account closure



REMEMBER:

Students should print or save a copy of their portal record and event history

STEM OPT Reminders

Employer Site Visits

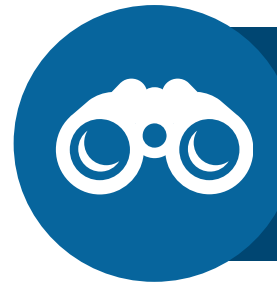
- The March 2016 STEM OPT rule allows DHS to conduct site visits of employers that train STEM OPT students
- Employers will receive advanced notification prior to a site visit
- **Prepare for an upcoming site visit:**
 - Update employer information and home address in SEVP Portal
 - Employer address should be address student reports to for work
 - DSOs should be prepared to provide student's Form I-983 if requested

Visit the Employer Sites Visit page on the STEM OPT Hub
StudyintheStates.dhs.gov/employer-site-visits

New SEVP Policy Guidance

OPT Major Area of Study Requirements

- Responds to 2014 GAO audit recommendation
- Provides clarifying language on major area of study requirements for OPT students
 - Students are responsible for providing a description of **how** job duties relate to their major
 - DSOs can document relationship in either SEVIS or student's file
- Highlights resources to assist with determining a relationship between job and major



REVIEW:

Sample explanations of a direct relationship in policy guidance

To read the full policy guidance visit
[ICE.gov/SEVIS/Schools](https://ice.dhs.gov/SEVIS/Schools)

Pre-submitted Question



STEM CIP Code

If a school reclassifies a major so that it becomes STEM eligible after a student has graduated with the major but while he/she is on regular OPT, is the student eligible for STEM OPT based upon the reclassified major?

New SEVP Policy Guidance

Form I-20 and Recruiters

- **ATTN! DSOs may sign & send I-20's electronically for the duration of the COVID-19 emergency. Refer to Broadcast Message 2003-03 dated March 26, 2020.**
- **Specifies that DSOs must issue and send Forms I-20 directly to prospective students and their dependents**
 - For minors, DSOs must send Forms I-20 directly to the student's parent or legal guardian
 - Recruiters have no role in issuing or handling Forms I-20
- **Reasons for guidance**
 - Privacy and fraud prevention, consistent with laws and regulations

Read the SEVP policy guidance Form I-20 Issuance and School Use of Recruiters at [ICE.gov/SEVIS/Schools](https://ice.dhs.gov/SEVIS/Schools)

Pre-submitted Question



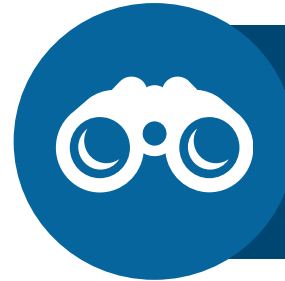
Form I-20 Issuance

SEVP recently issued policy guidance limiting Form I-20 distribution to the student only. However, regulation 22 CFR 62.12(c) in relation to DS-2019s makes an important allowance for releasing the document with permission to a third party. Does SEVP anticipate revising their original guidance to allow for this same practice?

Reminder for DSOs

Curricular Practical Training

- **Before authorizing CPT, DSOs should remember that:**
 - CPT must relate directly to the student's major area of study
 - Be an integral part of the school's established curriculum
 - Full-time or part-time
- **DSOs must authorize CPT in SEVIS**
 - Authorization cannot be backdated
 - Training must be secured before CPT authorization
 - CPT can only begin after student receives Form I-20 with the DSO endorsement
 - Student can have more than one CPT authorization
 - Separate authorization is needed
 - CPT requires a signed cooperative agreement



VISIT

The CPT Fact Sheet on
Study in the States for more
information

Reminder for DSOs

Merge Your SEVIS Accounts Today

- **Continue to submit SEVIS account merging requests**
 - As of March 2020, over 2,500 SEVIS accounts have been merged
- **How to merge accounts:**
 - Ensure first and last names are the same across all SEVIS accounts
 - Email request to SEVP@ice.dhs.gov
 - Include subject line “Merge Accounts”
 - Include table with:
 - Current active SEVIS username information and organizations
 - Whether each organization is a batch school or program
 - Desired username for merged account



REMEMBER:

Requests processed in the order in which they are received

Reminder for DSOs

SEVIS Annual Verification

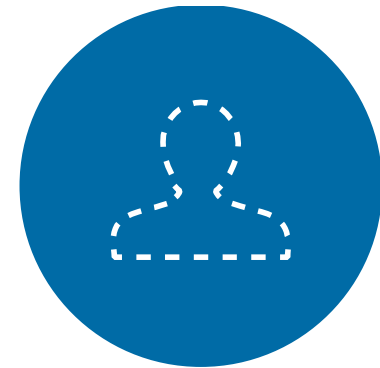
- **Beginning in December 2019, PDSOs must annually verify that DSOs who have access to SEVIS:**
 - Are still employed by the organization
 - Continue to be the selected PDSO or DSO
 - Require continued access to SEVIS
- **Annual verification must be completed by March 2, 2020**
 - Annual verification began on Dec. 3, 2019

Detailed instructions available on the SEVIS Help Hub
StudyintheStates.dhs.gov/SEVIS-Help-Hub/School-Records/PDSODSO-Annual-Verification

Field Representative Unit Updates

Current Field Representative Vacancies

- 56 field representatives deployed
- Vacancies remain in:
 - Milwaukee, Wisconsin
 - Norfolk, Virginia
 - Orlando, Florida
 - Phoenix, Arizona



HELPFUL RESOURCES

New Resource

How to Navigate Pay.gov

- **Schools must pay all fees through Pay.gov using:**
 - Bank account
 - Debit card
 - Credit card
- **Form-17 fees**
 - Search “SEVIS” in the search bar
 - Select “I-17 SEVIS School Certifications”
 - Enter the amount your school is paying based on submission
- **Form I-290B appeals fee**
 - Search “Form I-290B” in the search bar
 - Select “Form I-290B Notice of Appeal or Motion”
 - Payment can also be completed using PayPal and Amazon

Sign up for GovDelivery

Subscribe to Receive Updates

- **SEVP distributes regular program updates via GovDelivery**
 - SEVP Spotlight quarterly newsletter
 - SEVP Outreach Bulletin
 - Monthly program updates
 - Breaking program news
- **Subscribe to receive GovDelivery updates at [ICE.gov/SEVP](https://ice.gov/SEVP)**
 - Enter email in the Stay Connected box on left side of page



REMEMBER:

Sign up to receive updates from SEVP's government partners

Connect with Study in the States

Social Media



TWITTER
[@StudyinStates](#)



LINKEDIN

[Linkedin.com/Company/Student-and-Exchange-Visitor-Program](https://www.linkedin.com/company/student-and-exchange-visitor-program)



FACEBOOK

[Facebook.com/StudyintheStates](https://www.facebook.com/StudyintheStates)

Engage with SEVP

Stay Connected



KEY NEWS AND CONTENT

StudyintheStates.dhs.gov/Blog

Publications

Available through GovDelivery

SEVP Spotlight

SEVP Outreach Bulletin



ENGAGE THROUGH CONFERENCES

Fill out the SEVP Event
Request Form at

StudyintheStates.dhs.gov/Conferences



[@StudyinStates](https://twitter.com/StudyinStates)



Facebook.com/StudyintheStates



Linkedin.com/Company/Student-and-Exchange-Visitor-Program

SEVP Contact Information



PHONE

703-603-3400
800-892-4829



EMAIL

Case-specific questions
SEVP@ice.dhs.gov
Technical issues
SEVISHelpDesk@ice.dhs.gov

Monday through Friday, 8 a.m. to 6 p.m. ET, except federal holidays
Additional contact information at StudyintheStates.dhs.gov/Contact-Us

Contact your local field representative for questions about SEVP policies, processes and updates